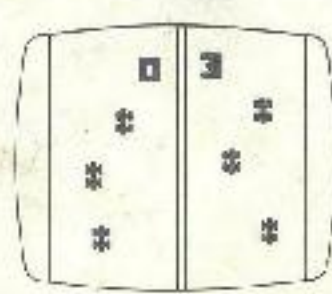
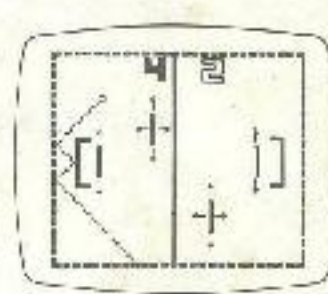
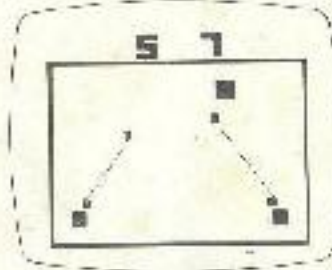
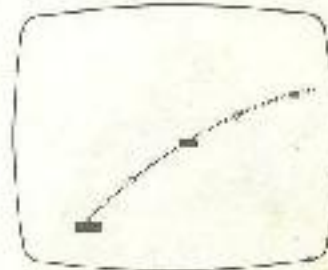
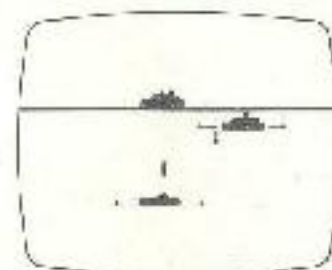
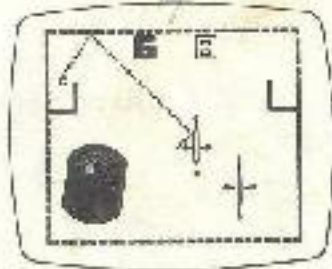
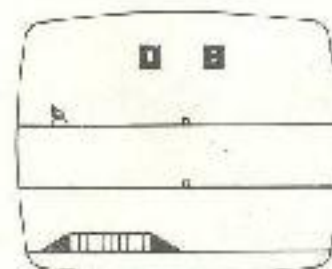
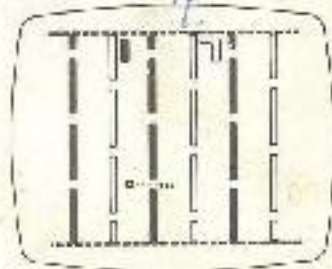
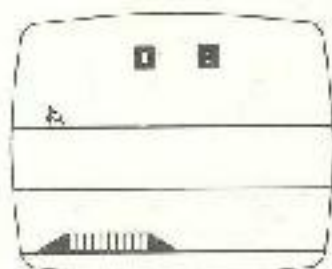
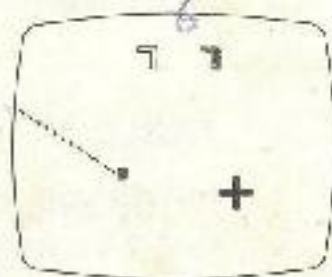
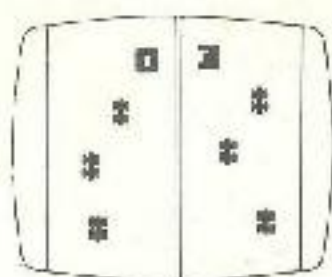


Radofin

tele-sports IV

Programmable Video System



OWNER'S MANUAL

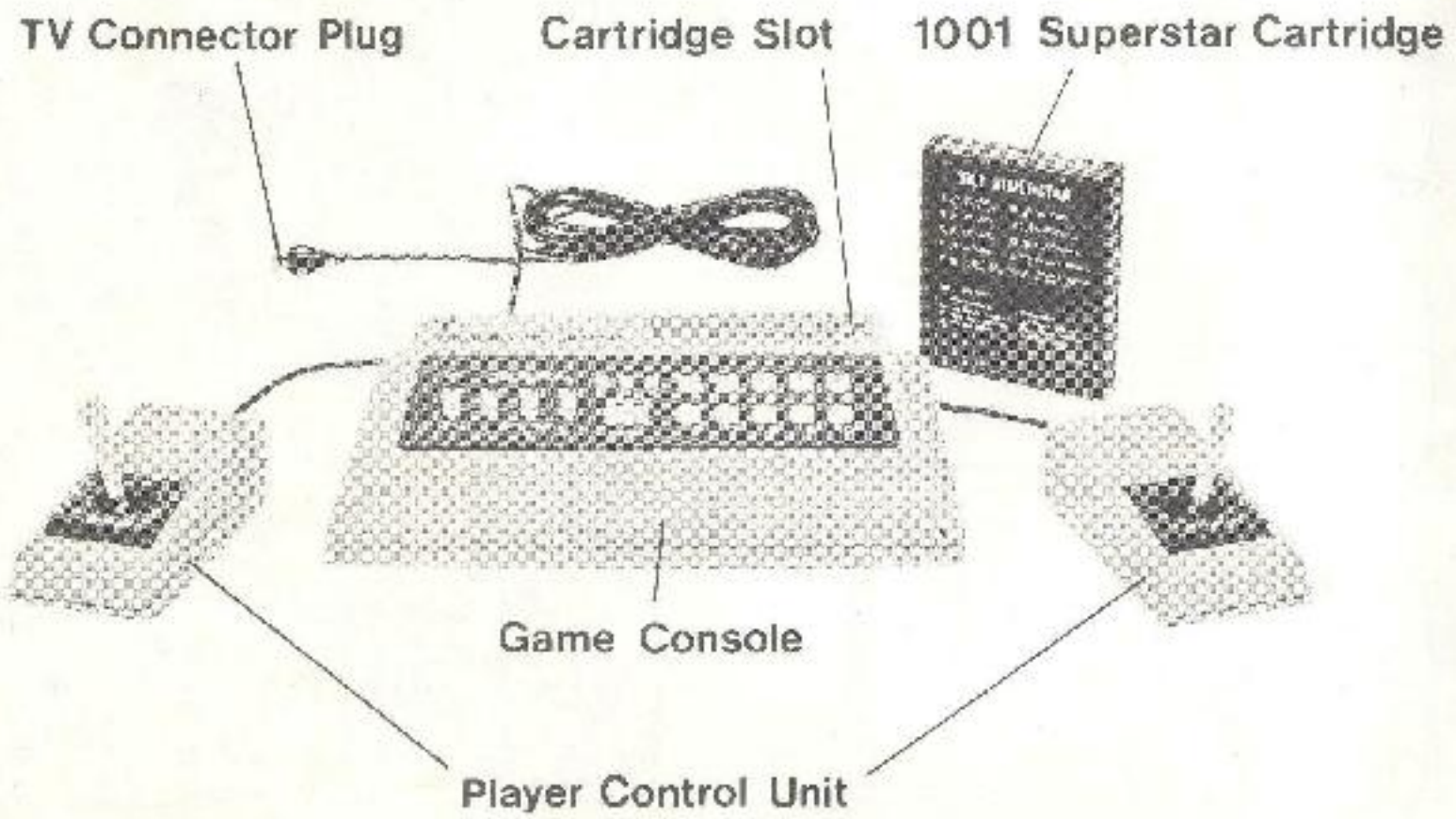
Your new *Programmable Video System* is one of the most advanced home entertainment systems now available. Its programmable features will add a new dimension of entertainment to your TV. It uses a game cartridge system which makes a maximum number of different games available for you to enjoy.

This game attaches easily to most brands of television . . . any screen size — black and white or color. In order to get the most out of this game please take a few minutes to read this booklet.

TABLE OF CONTENTS

Installation	2
Game Cartridges	3
How to Play Superstar Games	4, 5
Trouble Shooting	6
Maintenance	7

PROGRAMMABLE VIDEO SYSTEM



INSTALLATION

- 1-1 Remove Battery Cover and insert 6 HC1 or U11 (UM-2) 1.5V batteries. Make sure the batteries are placed in the proper position as shown inside the battery compartment. Replace the battery cover and the game is ready for play. CAUTION: If you do not intend to use your TV Game for long periods of time, be certain to remove the batteries.
- 1-2 Disconnect the TV Antenna from the rear of your TV. Insert the TV Connector Plug into the Antenna Jack located on the rear of your TV.
- 1-3 Switch on the Power Switch. Switch on your TV.
- 1-4 Tune your TV to receive the TV game as follows:
 - A. Switch the TV Channel Selector to an unused channel and press one of the game buttons on the TV game select keyboard (10).
 - B. Adjust the TV tuning control until it is tuned into the game. When you are 'tuned-in' properly you will have a clear image of the playing field.
 - C. Adjust the TV contrast, brightness, and color controls for a sharp, pleasing picture. Depending on your TV, it may be necessary to adjust the horizontal hold.
 - D. Turn the TV volume down to a low level.
- 1-5 Make sure the TV Game is switched 'OFF', then carefully insert the Superstar Game Cartridge into the slot on the Game Console. Note that the Cartridge is right side up — that is the printed label on the Cartridge is right side up and facing towards you; it should slide easily downwards through the 'door' in the Game Console until the cartridge connects inside the game. Be sure the cartridge is firmly connected inside but *do not force it*.
- 1-6 In order to get the best possible picture please take the following steps:
 - A. Check that the system is connected properly and the cartridge is fully inserted, then switch the Game Console ON and press the Reset Button. Set the switchbox to the 'Game' position.
 - B. Turn on your TV and switch to an unused channel on the channel selector.
 - C. Press the key marked '3' on the Game Console. With the Superstar Cartridge in the Game Console, key 3 will cause the Hockey game field to appear on the TV screen.
 - D. Adjust the tuning control on your TV set until the game picture appears on the screen. When you have the set 'tuned-in' properly you will have a clear picture image of the playing field.
 - E. Adjust the TV contrast, brightness, and color controls (if using a color TV) for a sharp pleasant picture.

- F. Depending on your TV it may be necessary to adjust the 'horizontal hold' or 'vertical hold'.
- G. You may select from 3 different background colours when playing on a colour TV. The colours are selected by pressing the desired colour selector key on the Game Console.

1-7 When playing the games you will hear sound effects over the loudspeaker on your TV. If the game sounds are not clear follow these steps to tune in the sound effects:

- A. Press key 7 on the Game Console, then press the Reset Button. This will cause the Gridball Game to appear on your TV screen. Press the 'Serve' buttons on both player controls units at the same time. This starts game play and sound effects will be heard. Set the TV Volume to a suitable level.
- B. The Sound Control is located on the underside of the Game Console. Adjust the Sound Control with a small screwdriver to 'tune-in' the sound effects. Make any adjustment carefully and do not use force to turn this control. The range of movement of this control is only one-half turn.

1-8 NOTICE: SWITCH OFF YOUR PROGRAMMABLE VIDEO SYSTEM EACH TIME YOU HAVE FINISHED PLAYING THE GAMES. IF YOU LEAVE THE SAME GAME PATTERN ON YOUR TV SCREEN FOR MORE THAN 6-8 HOURS CONTINUOUSLY, THERE IS A POSSIBILITY THAT THE GAME PATTERN COULD BE PERMANENTLY IMPRINTED ON THE PICTURE TUBE SCREEN.

GAME CARTRIDGES

2-1 The Programmable Video System allows you to use your Game Console with different optional cartridges to play a wide variety of games. The Superstar game cartridge included with your Programmable Video System has 10 different games. There are a number of other game cartridges now available which enable you to play many other exciting games on your Programmable Video System.

2-2 The How To Play section of this booklet (Page 4) gives detailed instructions for playing the 10 games on the Superstar Game Cartridge. Complete instructions for other game cartridges are included with the cartridge.

2-3 Inserting and Removing cartridges:

- A. Always switch your Programmable Video System off when inserting or removing game cartridges.
- B. Hold the cartridge so that it is right side up and aligned with the slot in the Game Console.

- C. Insert the cartridge down into the Game Console. The cartridge should slide without being forced. Slide the cartridge down until you feel it connect inside the Game Console at the bottom of its travel. NEVER TRY TO FORCE A CARTRIDGE INTO THE GAME CONSOLE.
- D. To remove a cartridge turn the Game Console OFF, then pull the cartridge straight up out of the Game Console.

2-4 PRECAUTIONS. The Game Cartridges contain sensitive electronic circuitry and should never be subjected to rough handling.

- A. Do not open the spring-loaded door at the bottom of the cartridge. Never poke any foreign object through this door.
- B. Avoid storing cartridges where they will be exposed to excessive heat and moisture.
- C. Always switch the Game Console off when inserting and removing Game Cartridges.

HOW TO PLAY – SUPERSTAR GAME CARTRIDGE

3-1 After completing the installation instructions you are ready to play. The following information is for the Superstar Game Cartridge which was included with your Programmable Video System, for additional details see the Superstar Game Instructions. Playing Instructions for other game cartridges are included with the game cartridges.

3-2 There are 10 games on the Superstar Cartridge. Select the game you wish to play by pressing the Reset Button, followed by the Game Selector Key which corresponds to the game you desire:

Superstar Games

Key	1. Space Target	6. Target Practice
	2. Tennis	7. Gridball
	3. Hockey	8. Soccer
	4. Squash	9. Basketball
	5. Squash-Practice	10. Basketball-Practice

3-3 Switches A, B & C allow the players to vary the game speed, and degree of difficulty for one or both players. These switches may be used to 'handicap' one player thus giving a beginner an advantage over a more experienced player. The switches can all be set to the 'Professional' position to make more challenging games for two experienced players. In the Superstar game these switches are used for the following functions:

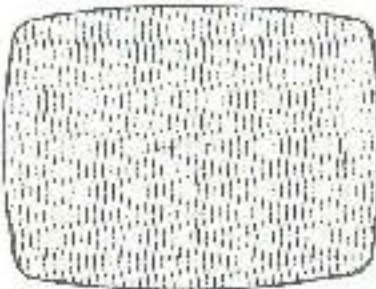
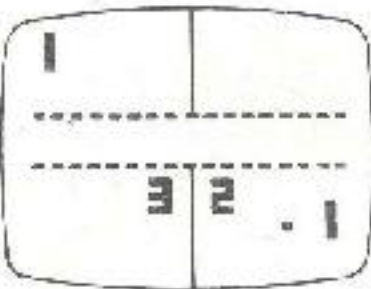
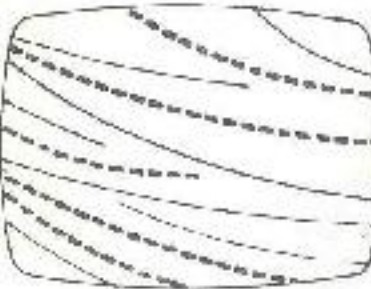

- Switch A — Left Player Size. Selects either a large or small size player for the person using the left player control.
- Switch B — Right Player Size. Selects the size for right player.
- Switch C — Ball Speed. In the 'Amateur' position the ball travels slowly. When the 'Professional' setting is used the ball will start off traveling slowly and then change to high speed after seven consecutive hits by the players without a goal being scored.

Some of the other optional cartridges do not require the use of all ten Game Selector Keys or all three switches. The optional Grand Prix game cartridge, for example uses only two of the Game Selector Keys and one of the switches.

- 3-4 Push the Reset Button to reset the scores to zero and commence play. As you become more skilful at playing the games you will be able to influence the rebound angle of the ball and thus 'aim' your shots by hitting the ball with different positions of the player.
- 3-5 The first player to score 15 points is the winner of a game. After 15 points the Reset button must be pressed to start a new game.
- 3-6 At the end of play be sure to set the power switch to 'off' position. Set the switchbox to the 'Antenna' position and you can then resume watching regular TV broadcast stations.
- 3-7 On certain models of TV's it may be necessary to adjust the vertical positions of the players on the TV screen. If you find that you cannot move the players completely up and down the screen, or if the players are not visible, adjust the Player Centering Control. This control is located on the back of the Game Console. Adjust the centering control so players are in their proper positions and the player controls are able to move the players up and down the screen.
- 3.8 This Programmable Video System is designed to operate with all brands of televisions. On some TV's the players may occasionally appear to vibrate or 'wobble' slightly when they are left stationary in some locations on the screen. Likewise, the ball may appear to serve from slightly off the center line in the Hockey and Gridball games. Neither of these has any effect on play.

TROUBLE SHOOTING GUIDE

Be sure all connections to the television and game are secure. Do not open the set. This game does not contain any user serviceable parts.

SYMPTOM	REMEDY
 <ul style="list-style-type: none"> * No game. * Faint TV image or herring bone pattern. 	<ul style="list-style-type: none"> * Cartridge is not fully inserted into Game Console. * Cartridge was inserted into game while power switch was 'ON', slide switch to off then back on. * Game not connected properly to TV. * AC adaptor not plugged into wall. * Game Console power switch not turned 'ON'. * TV not tuned to proper channel. Adjust channel selector tuning on your TV. * Switchbox not set to 'Game'.
 <ul style="list-style-type: none"> * Picture rolls. * Bottom line off screen. 	<ul style="list-style-type: none"> * Adjust 'Vertical Hold' control on TV set.
 <ul style="list-style-type: none"> * Stripes ACROSS SCREEN. * Lots of Dots. 	<ul style="list-style-type: none"> * Adjust 'Horizontal Hold' control on TV set. * Reduce 'Color intensity' on color TV sets.
 <ul style="list-style-type: none"> * Vertical or horizontal line moving across screen. 	<ul style="list-style-type: none"> * Push game reset button on Game Console. * Adjust contrast control on TV

ALWAYS REPLACE BATTERIES FIRST BEFORE TROUBLE SHOOTING. WEAK BATTERIES ARE RESPONSIBLE FOR MOST MALFUNCTIONS!

SYMPTOM	REMEDY
* Game 'locked' to 1 particular playing field; cannot change games.	* Push game Reset Button.
* No players appear on screen, or players cannot move fully to top or bottom of screen.	* Adjust 'Centering Control' on Game Console * Make sure player control units are plugged in properly.
* Weak or fuzzy sound.	* Adjust 'Sound Control' on Game Console.
* No regular TV program.	* Antenna not correctly plugged into TV. * TV still tuned to TV game channel.

MAINTENANCE

Your Programmable Video System has been carefully assembled using highest quality components. It has been fully tested and is designed to provide you with many years of enjoyment. Please keep the following points in mind in order to maintain your Programmable Video System in good working order.

- * Don't try to force Game Cartridges into the Game Console. Never put pencils, pens or any other object through the slot in the Game Console. Don't allow food crumbs, liquids, or dirt to fall through the game cartridge slot.
- * Prevent dust from accumulating in the game cartridge slot and falling inside the Game Console.
- * Unplug the mains power supply from the mains when the Programmable Video System not in use. Do not attempt to use any other power supply as you could damage the Game Console. Do not attempt to use the power supply for other purposes.
- * Remember to turn the power switch OFF when not in use and whenever inserting or removing game cartridges.
- * Use a soft, slightly damp cloth to clean the exterior of the Game Console.
- * Avoid subjecting the Game Console or Game Cartridges to excessive heat or rough handling.
- * Do not attempt to use a Game Cartridge from another brand TV Game with this Game System.

7c